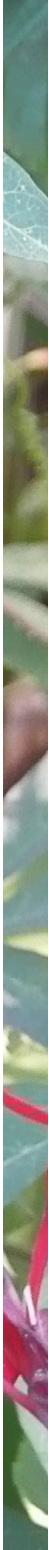




Paida
Orphanage



ANNUAL REPORT 2013





PAIDA ORPHANAGE
ANNUAL REPORT
2013



TABLE OF CONTENTS

1. Foreword	6
2. Purpose of this report	9
3. Who we are	10
a. Governance	12
b. Biographies	14
4. Aims of the organization and progress update	19
5. Annual performance evaluation	28
a. Response to main challenges 2012	28
b. Main achievements in 2013	29
c. Main challenges in 2013	30
6. Financial review	32
7. Conclusion & Outlook	35
8. Auditor's comments	37
9. Annexes	38
a. Detail of estimates for school	38
b. Examples of fund raising documents	38
c. Names and pictures of sponsored children	40
d. School grades of the children going to school in 2013	46
e. List of children present in the orphanage on December 2013	62
f. Report of internship of student (Sarah Hahusseau)	63
g. Picture of meeting of executive committee with 3 representatives of the Soeurs Oblates de l'Assomption in Paris	64
h. Pictures and Diploma of Bachelor's Degree in Psychology of Sister Patience	65
10. Contacts	67

FOREWORD

In 2013, the North-Kivu has again been suffering from the conflict in the region, mainly derived from the activities of the armed group M23. Despite the end of the fighting between the armed forces of the DRC and the M23 in November 2013, other conflicts drag on and trigger civilian casualties and displacements in the area immediately surrounding the orphanage.

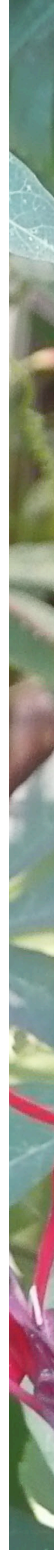
Unfortunately, we have to report two children which died in the orphanage. The mother of the twins died during labor and when the father of the children delivered them to the orphanage, their condition was already too critical, so they deceased a few days after their arrival to the orphanage.

Nevertheless, PaidaOrphanage is proud to report steady positive progress with the development of the children in the orphanage as well as various projects.

We see our babies becoming toddlers, and our toddlers becoming young boys and girls that start their education and integration into society. Four children started school in 2013, which increases the total number of orphans in school to 12.

Also four children have been reintegrated into their families during 2013.

As planned, we made significant progress with the fundraising for the construction of the new orphanage



and school complex. PaidAOrphanage received its first donation from an institutional donor as well as various significant contributions from friends of PaidAOrphanage. We are proud to report that the construction of the school has commenced in 2013, three years ahead of the initial objective of 2016.

These progresses, and even more, the support from all donors and friends of PaidAOrphanage, are very encouraging signs that a small group of motivated individuals can make a visible difference for our orphans as well as the region.

We hope you enjoy reading this report and thank you very much for your interest and support.

Daniel Hoff
President
PaidAOrphanage

Marie-Laure de Quina
Vice-President
PaidAOrphanage







PURPOSE OF THIS REPORT

This report is directed towards sponsors, donors, beneficiaries, staff members and all other people interested in the activities of PaidaOrphanage. It gives an outline of the work of PaidaOrphanage and the actions we have undertaken during 2013 to meet our objectives.

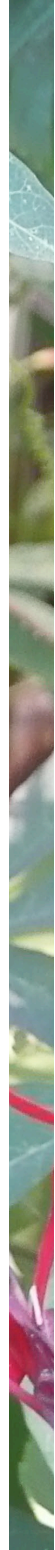


WHO WE ARE

The orphanage was created in 1929 in the neighborhood of Paida, city of Beni in the Democratic Republic of the Congo ("DRC"). It is currently being managed by 2 Sisters from the order of the "Soeur Oblates de l'Assomption" supported by two nurses. Other Sisters manage a hospital and a school and help out in the orphanage from time to time if required.

In the summer of 2010, Marie-Laure de Quina and Daniel Hoff, visited the orphanage in the DRC.

They were both moved and impressed by what they saw there, and decided to support the Sisters by creating the association "PaidaOrphanage" in Europe. The association was established in January 2011 in Switzerland with the aim of supporting the work of the sisters and the wellbeing of the orphans through the promotion of PaidaOrphanage and centralized fundraising.





1. The orphanage building with the Rwenzori Mountain as surroundings



2. The inside of the orphanage with some of the children



3. The kitchen, dining area and playing area that was built in 2012 with the help of our donors



4. Part of the complex that comprises the orphanage, a school and a hospital

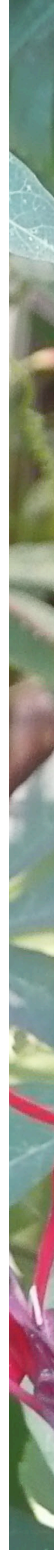
A) Governance

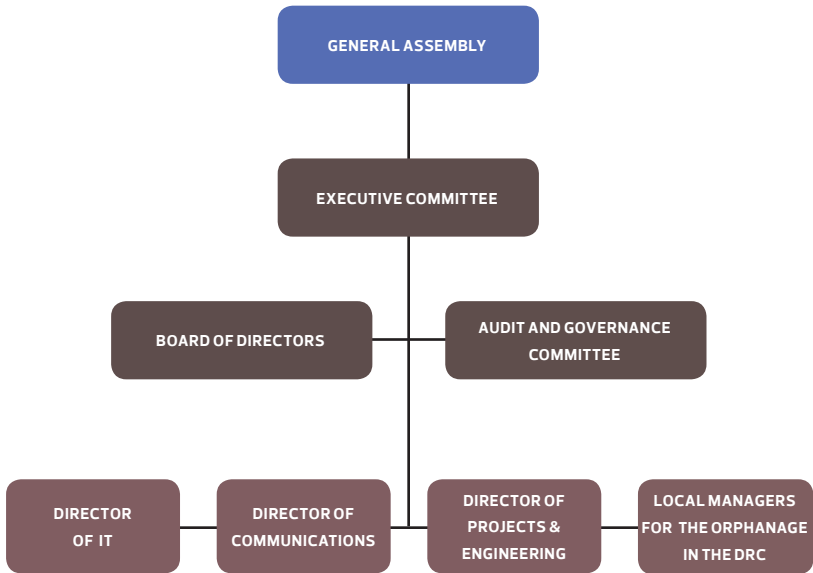
The highest level of governance of PaidaOrphanage is the General Assembly, which is constituted by all members of the organization.

The main governing body is the Board of Directors together with the Audit and Governance Committee.

The Executive Committee manages day-to-day business and is supported by the Director for Communication, the Director for IT, the Director for Projects and Engineering as well as the Local Managers for the Orphanage in the DRC.

Due to the heavy workload related to communication, PaidaOrphanage has decided to split the role of Director for Communication and IT into two different roles. We are happy to welcome María Lecanda as Director for Communication. María has been proven invaluable during 2013 to finalize various communication materials related to several projects, in particular the fund raising.





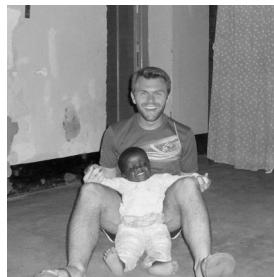
Board of Directors	Audit and Governance Committee	Executive Committee	Director of IT	Director of Projects & Engineering	Director of Communications	Local Responsible
Daniel Hoff		x				
Marie-Laure de Quina		x				
Martin Keller	x					
Delphine Menezes Cordeiro	x					
Josephine Mantombela						x
Jeanne-Marie Kisenge						x
Ruben Nascimento			x			
Marc Suchet				x		
María Lecanda					x	

B) Biographies

Daniel Hoff [PRESIDENT]

I am a German national and studied Business Administration in Cologne, Germany and Lisbon, Portugal with emphasis on international management strategy and human resource management. As co-founder of Projecto Universitário em Maputo, I gained valuable insights into the creation and management of non-profit organizations in a developing context and worked several months in Mozambique. I worked various years as a consultant with PricewaterhouseCoopers in Switzerland and Brazil. I currently live in Dubai and work for Shelf Drilling, a start up company in the offshore drilling industry.

Relationship to PaidáOrphanage: In 2010 I stayed for some months in the orphanage in Paidá, building strong relationships with the Sisters who manage the orphanage and with the children. I was hugely impressed not only by the compassion of the Sisters, but also by their effectiveness and efficiency in managing the orphanage, despite the minimal resources. Together with my wife Marie-Laure we decided to create the PaidáOrphanage association to support the orphanage in the long term.



Marie-Laure de Quina [VICE-PRESIDENT]

I am a French national and studied Business Administration and Finance with a specialization during my Masters degree in Supply Chain in Paris, France. After working for over 5 years in supply chain in large multinational companies, I worked as a procurer and logistician for the International Committee of the Red Cross (ICRC) in various African countries. I currently live in Dubai and work for the Federation of the International Red Cross (IFRC).

Relationship to PaidáOrphanage: In 2010 I worked in



the city of Beni as logistician for the ICRC. During my time there, I visited the 3 orphanages in the city and felt very comfortable with this one. Therefore I decided to support the orphanage, first by going there regularly (every weekend), then by asking Daniel to come to help them for several months by being there physically, and now through the association. We know and trust the orphanage and the Sisters managing it. We really believe in their work, in their honesty and in their will and dedication to improving the lives of these orphans.



Ruben Nascimento [DIRECTOR OF IT]

I am a Portuguese national and have been a web designer and developer since 2003. Besides having worked in several creative design agencies in Portugal, I have also worked freelance for international agencies and companies. I have studied Design for Multimedia Applications at Etic (Escola Técnica de Imagem e Comunicação) in Lisbon, Portugal and Visual Communication at Cardiff Metropolitan University in Cardiff, Wales. I started working for non-governmental projects in 2005, by designing and developing the website and logo for Projecto Universitário em Maputo (PUMAP) and, later, by helping other projects with their communication, for example the Associação Humanitária para a Educação e Apoio ao Desenvolvimento (AHEAD). For PaidAOrphanage, I am responsible for all of the visual communication language, which encloses the design of the sponsorship materials, as well as other graphic and online communications. I have known Daniel Hoff for several years now and admire his and Marie-Laure's dedication to this orphanage. I passionately believe that with projects like this, it is possible to change our world by helping other people's lives, and I feel fulfilled by doing it.

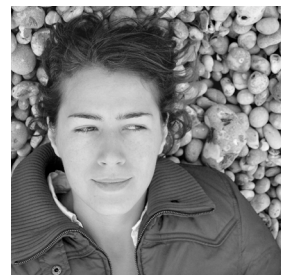
Marc Suchet [DIRECTOR OF PROJECTS AND ENGINEERING]

French, I am an engineer from the Special School of Public Works (École Spéciale des Travaux Publics) in Paris. Having worked more than 10 years in the oil exploration sector, mainly in Africa and in the Middle East, and having worked also on building sites in France, I decided to re-orientate my career and to join the International Committee of the Red Cross (ICRC) in 2004. In 2010, I had the pleasure to make a mission to Beni for the ICRC, with Marie Laure. I also met Daniel during the same period. Having visited PaidOrphanage several times with them, I consider their project of support extraordinary. I know the Congo and the North Kivu very well, its exuberant nature, its fabulous landscapes, its so charming population that has the ability to survive with smiles and pragmatism the conflicts and poverty which have affected the region for so many decades. The orphanage is a place of serenity for the children. The peaceful atmosphere that exists there as well as the dedication of the sisters who take care of it, in spite of the minimal means at their disposal, convinced me of the value of Marie-Laure and Daniel's project. I have committed to them all my technical support to ensure a successful conclusion of this project.



Maria Lecanda [DIRECTOR OF COMMUNICATIONS]

I was born in Mexico, where I followed my Industrial Design studies at the Tecnológico de Monterrey (ITESM), with a specialty in System and Product Design at Aalborg Universitet, in Denmark. In 2008, I moved to Belgium where I worked at BIHAIN studio and then as a freelance designer at Nookie's, developing new children's furniture lines, accessories and retail furniture for the European market. Since 2012 I have dedicated myself



to photography –my other passion– and have worked as a photographer doing portraits, head shots and kids fashion shoots for private clients, as well as personal projects.

I met Daniel and Marie–Laure in Dubai, where I currently live, and found their cause and their personal motivation to help the children of Paidá Orphanage quite contagious. Without thinking about it twice, I started helping with designing printed media to raise funds for the Bungulu school project, processing images for the children's sponsors and editing informative and promotional video spots about Paidá Orphanage. I have gladly taken this opportunity, hoping that my background as a photographer and designer may help improve these children's lives.



AIMS OF THE ORGANIZATION AND PROGRESS UPDATE

In general, the purpose of the organization is to support schools in developing countries, in particular to provide access to basic education for the local population, especially children. Special attention is given to orphaned children. As far as possible, the association will also facilitate access to basic nutrition and promote health. More specifically, PaidAOrphanage aims to build a school complex for at least 400 children, including an orphanage with the capacity to accommodate at least 50 orphans, in the city of Beni, district North Kivu in the DRC.

The following projects are currently ongoing and have progressed in 2013:

SPO – Sponsor an orphan

ORP – Creation of new orphanage and school complex

We present below an update of the progress made in 2013 for each of these projects.

Project SPO

“Sponsor an orphan”

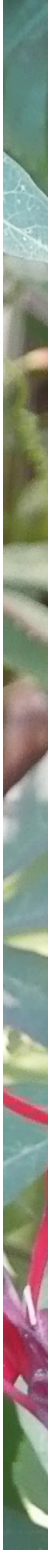
By the end of 2013, 29 orphans were living in Paidá. To guarantee a proper level of nutrition, health care and education, we look for sponsorships. Even if physical infrastructure does exist to accommodate orphaned children, funds are still required to guarantee a proper level of nutrition, health care and education. Occasional or monthly contributions (ideally of USD 25 per month per child) will enable PaidáOrphanage to significantly increase the quality of lives of the orphans. On average we receive in 2013 USD 35 per month per child.

To maximize the effect of these vital funds, we have ensured that **no administrative costs are deducted from your contributions**¹. Each contribution made by our donors goes directly to support the children and the staff of the orphanage. The sponsor will be able to follow the development of the child sponsored, but his or her financial donations will also be used to support the other children according to their needs. The funds are used to purchase food and medicaments for all the orphans.

The fact that the donation is not specific to a child avoids inequalities between the orphans. Nevertheless if a sponsored child is of school age, the donations will be used in the first place to guarantee their tuition fees.

On December 31st 2013, 9 out of our 29 orphans were being sponsored. See Annex C for the names and pictures of the sponsored children.

¹All the limited administrative costs (e.g. transfer of funds, office costs and resources) are borne by Marie-Laure de Quina and Daniel Hoff.





Sponsor one of our 29 orphans through occasional or monthly contributions.
Please contact us by email if you would like to help, or if you wish to know more; info@paidaorphnanage.org

Project ORP

“Creation of new orphanage and school complex”

PaidaOrphanage is working on the construction of another accommodation building for approximately 50 orphans up to the age of 18 years. In addition, the complex will include a school to provide education for the orphans and for approximately 400 children from the surrounding areas. Land has already been provided and PaidaOrphanage has a clear budget and plan for the construction of the infrastructure provided by a local architect and approved by our Director for Projects and Engineering.

School:

The new school will have 12 classrooms, an administrative building, one large room available either for studying or meetings, and a library. These 12 classrooms will allow us to welcome 400 students.

The total cost of building and equipping the school is estimated

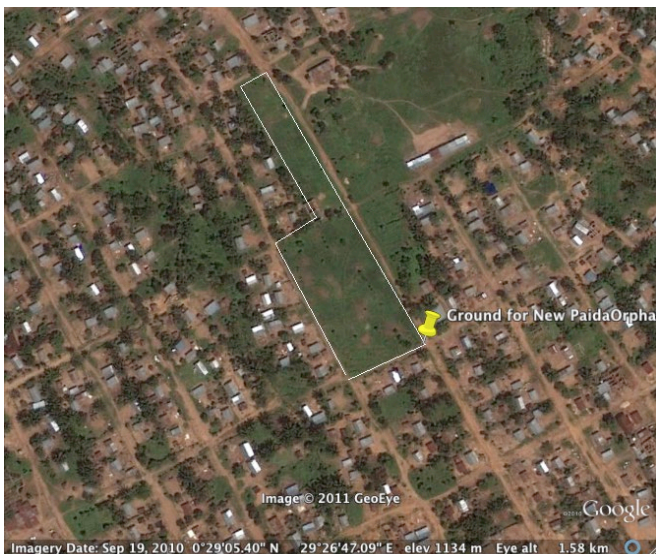


Image of the plot from Google Earth

at 180,000 dollars. The timeline of the construction of the school is estimated at 570 days. However this will depend on the availability of financial funds.

Detail of the estimates for the school can be found in Annex A.

Orphanage:

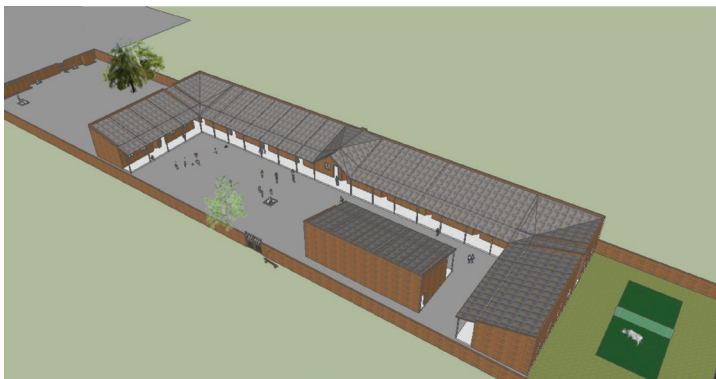
The new orphanage will be composed of two parts. One for the "day life" comprising: the living room, a community room, the kitchen, the refectory, some storage rooms, etc.

Another part will be reserved for the interns' dormitory. It will have 28 bedrooms, each with 2 beds. Two of these rooms will be for our staff, and one bedroom would be available for sick children. The 25 remaining rooms would allow us to welcome 50 orphans.

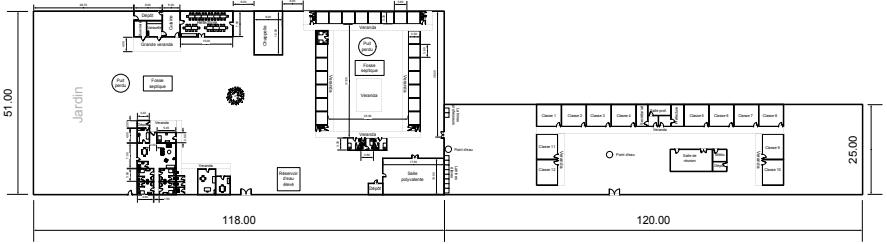
The total cost of building and equipping the orphanage is estimated at 135,000 dollars. The detailed cost estimate of the school is still on-going. The priority of PaidaOrphanage at the moment is to work on the school. The orphanage fundraising and construction will only start after completion of the school.

The timeline to begin the construction of the orphanage is estimated in five to seven years. However this will depend on the availability of financial funds.

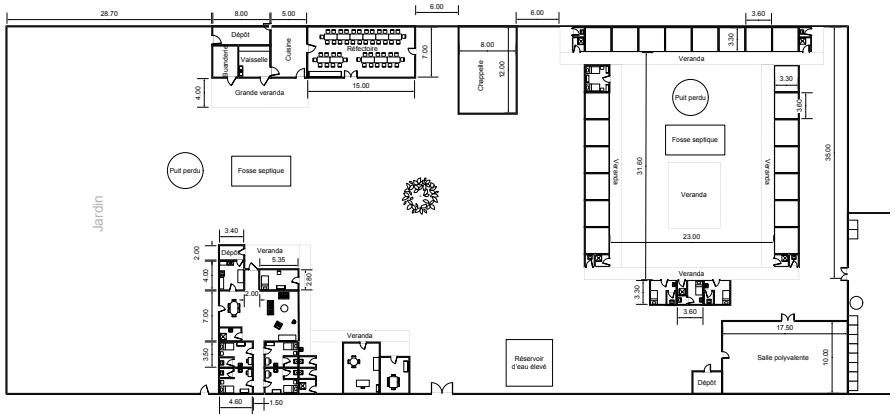
Overview of orphanage and school complex



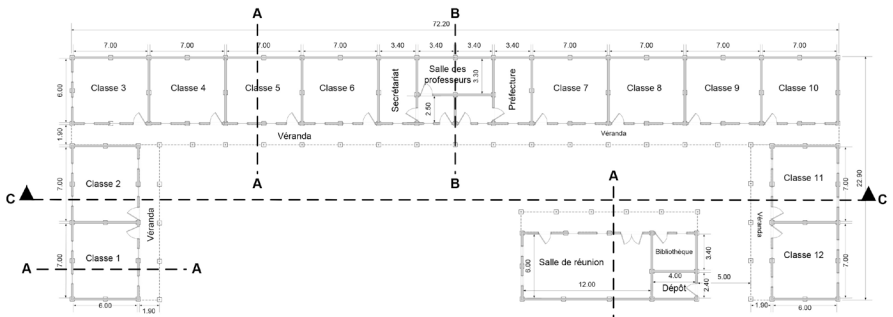
3D plan of the school administration block and classrooms



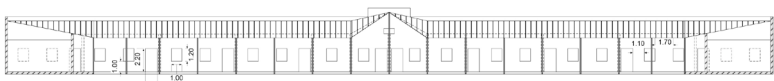
General over view plan of the proposed orphanage and school complex



Plan of the boarding school residence and dormitory



Vue de face C-C



Plan of the school administration block and classrooms

We are proud to report that the construction of the school has been initiated in 2013, 3 years ahead of the initial objective to start the construction in 2016. Two classrooms have been built from May the 13th 2013 to August the 20th 2013 with the help of 8 workers supervised by the local architect.





School fundraising had started in 2011 with a donation of CHF 6,100. Then, fundraising was reactivated in 2013 as planned with the following results:

In February 2013, employees of PricewaterhouseCoopers Switzerland granted a donation of 160 Swiss Francs. In March 2013, the Sisters Oblates de l'Assomption, our local partners in Congo that are managing the orphanage, co-financed the construction of the school and gave USD 21,482. Then on July and October 2013, private donors gave 3,010 Swiss Francs for the project.

Then by mid-2013 various fund raising documents have been completed. By October 2013 the documents have been sent to selected institutions with the request for funding, and produced the following results:

In November 2013 the Commune de Lancy, a commune in Geneva, Switzerland, granted a donation of 4,000 Swiss Francs.

The table below summarizes the progress of the institutional fundraising during 2013.

Potential Donor	Request Sent	Request Status	Grant
Commune of Bernex	October 2013	Declined	-
Commune of Carouge	October 2013	Pending	Pending
Commune of Confignon	October 2013	Declined	-
Commune de Lancy	October 2013	Approved	CHF 4,000
Commune de Meyrin	October 2013	Pending	Pending
Fondation Coromandel	October 2013	Pending	Pending
SIG Geneva	December 2013	Pending	Pending

Examples of the fund raising documents can be found in Annex B.

ANNUAL PERFORMANCE EVALUATION

A) Response to main challenges 2012

The following actions were taken in 2013 in order to mitigate the main challenges of the year 2012:

Challenge 2012	Response 2013
<p>⊙ Maintain a strong link between the executive committee and the local Managers of PaidaOrphanage</p>	<p>Regular phone calls, emails and SMSs supported a continuous communication with the local Managers of PaidaOrphanage. In addition, a face-to-face meeting in Paris with three representatives of the Soeurs Oblates de l'Assomption further allowed to review the progress together and get aligned with regards to next steps. A visit of the orphanage from at least one representative of the executive committee is currently being organized for the second half of 2014.</p>
<p>⊙ Workload of executive committee</p>	<p>A student has been engaged for two weeks to support the communication with the sponsors of the orphans. A Director of Communications has been found to support the communication related workload.</p>
<p>⊙ Fundraising for new project ORP</p>	<p>As planned, the project has been split in various phases. Various documents have been prepared to support the fund raising requests.</p>
<p>⊙ Dependency on regular income from donations</p>	<p>No action taken to reduce dependency on regular income from the donation of sponsors.</p>

B) Main achievements in 2013

The following table summarizes main achievements in 2013:

Achievements
<p>Project SPO – Sponsor an orphan:</p> <ul style="list-style-type: none"> ✓ Engagement of sponsors to support seven children on a monthly basis, raising a total of CHF 2,468 for the year 2013. See Annex C for the names and pictures of the sponsored children. See Annex D for the School grades of the children going to school in 2013. See Annex E for the list of children present in the orphanage on December 2013. ✓ A one-time sporadic donation of CHF 1,500 has been made by Andreas and Rahel Graf and their generous wedding community. ✓ In 2013, a notebook with the logo of the association and a painting of an African village has been designed. This will be produced in 2014 and then distributed to current sponsors and other friends of PaidaOrphanage.
<p>Project ORP – Creation of new orphanage and school complex:</p> <ul style="list-style-type: none"> ✓ Construction of school started, 2 classrooms already achieved on August 2013. ✓ Main fund raising documentation finalized. ✓ First donation from an institutional donor received (CHF 4,000 from the Commune de Lancy).
<p>Management of PaidaOrphanage:</p> <p>Management:</p> <ul style="list-style-type: none"> ✓ New Director of Communication engaged (Maria Lecanda). ✓ Temporary support from student during internship in February 2013 (Sarah Hahusseau). See Annex F for report of internship of student Sarah Hahusseau. ✓ Meeting in August 2013 with 3 representatives of the Soeurs Oblates de l'Assomption in Paris. See Annex G for pictures of meeting of executive committee with 3 representatives of the Soeurs Oblates de l'Assomption in Paris. ✓ Sister Patience finalized her Bachelor's Degree in Psychology with emphasis on developmental psychology for children (further details can be found in our annual report 2011 under Project FOR). See Annex H for pictures and Diploma of Bachelor's Degree in Psychology of Sister Patience <p>Communication:</p> <ul style="list-style-type: none"> ✓ A video showing the daily life in the orphanage in DRC has been produced. It will be used in 2014 to provide a good vision of the orphans environment and further promote the fund raising. ✓ Regular updates of the website www.paidaorphanage.org <p>Finance:</p> <ul style="list-style-type: none"> ✓ No administrative fees levied on donations. ✓ Total donations of CHF 1,500 received as non-earmarked funding for the orphanage. ✓ Total donations of CHF 7,170.40 received for the construction of the new school and orphanage complex. ✓ Total of CHF 5,216.10 transferred to PaidaOrphanage DRC in 2013.

C) Main challenges in 2013

The following table summarizes the main challenges in 2013, their context and potential mitigations/solutions proposed for 2014:

Challenge 2013	Problem	Response
Maintaining a strong link between the Executive Committee and the local Managers of PaidOrphanage	All communication is digital with its associated downsides (limited availability of proper access to the internet or good telephone network in the DRC); Lack of stability and security in the region; Lack of availability of the Executive Committee members.	Visit by at least one member of the executive committee to the orphanage in the second half of 2014
Workload of Executive Committee	Lack of personnel for ongoing administration requirements and move projects for ward; Lack of time of PaidOrphanage members to concentrate on the project	Engage additional staff (e.g. student) to work on specific tasks
Transfer of money to the Democratic Republic of Congo	Secure banks are not available in Beni and transfers of funds from abroad can only be made through companies like Wester Union. However for large transfers, the fees from these companies are high and would reduce considerably the amount given	Check if other options of transfer either locally or through the Sister Oblates de l'Assomption headquarters in France are possible.



FINANCIAL REVIEW

The following chart shows continuously low administrative cost² as well as a continuous flow of donations to the organization and a growing cash flow to the orphanage in the DRC.

Expenses				
Item	Currency	2013	2012	2011
Total funds transferred to PaidOrphanage DRC related to the sponsorship of orphans (SPO)	CHF	3,716	0	0
Total funds transferred to PaidOrphanage DRC related to the construction of an additional school and orphanage complex (ORP)	CHF	0	0	0
Total unearmarked funds transferred to PaidOrphanage DRC (OTHER)	CHF	1,500	2,368	2,099
Cost of marketing / communication	CHF	751	382	0
Bank account fees	CHF	36	40	18
Fees for the transfer of funds to the DRC	CHF	229	105	158
TOTAL		6,232	2,895	2,275

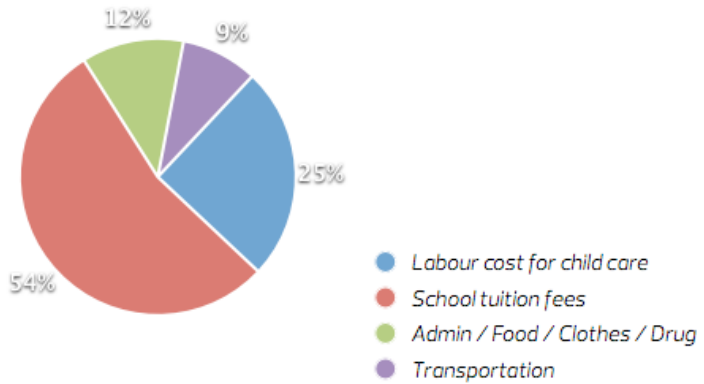
Income				
Item	Currency	2013	2012	2011
Donations related to the sponsorship of orphans (SPO)	CHF	2,468	6,123	1,092
Donations related to the construction of an additional orphanage and school complex (ORP)	CHF	7,170	0	6,100
Unearmarked funding for PaidOrphanage	CHF	1,500	1,933	2,099
Additional donations to cover administrative cost of PaidOrphanage	CHF	980	540	158
Interest	CHF	5	5	1
TOTAL		12,123	8,600	9,450

BALANCE		5,891	5,705	7,174
----------------	--	--------------	--------------	--------------

² All administrative cost are paid for by the private funds of the executive committee.

In 2014 we expect to send a similar amount of funds related to the sponsorship of orphans (SPO) but we expect to send a lot more funds related to the construction of the new complex (ORP).

The following chart illustrates how the funds related to the sponsorship of the orphans were used in 2013 in the DRC.







CONCLUSION AND OUTLOOK

2013 marked the third birthday of PaidaOrphanage. Despite of the youth of the organization, PaidaOrphanage already demonstrated that it can successfully plan and execute projects to achieve the objectives of the organization. The latest milestone and proof is the commencement of the construction for the new school and orphanage complex three years ahead of the initial objective.

In addition, PaidaOrphanage showed continuity in collecting donations and transferring them to the DRC for the benefit of the children in the orphanage. Compared to how it was during our last visit in 2010, the various reports, photos and videos which we receive prove a better quality of living and better infrastructure for the orphans. The kids do not have to sit on the floor anymore for their meals and the food now comes out of a proper kitchen with current water, not simply from a fireplace outside. School attendance for all children in school age remains at 100% and the grades of the students show a steady positive development.

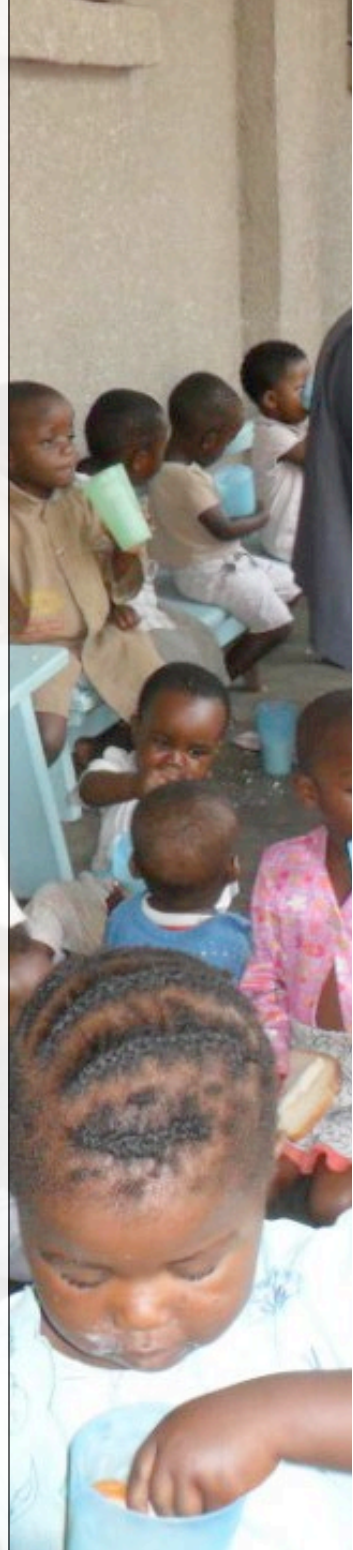
In 2014, we want to focus on:

1. Raising additional funds for project ORP
2. Continue the construction of the school complex, and
3. Organizing a visit to the orphanage by at least one member of the executive committee in the second half of 2014.

We thank all supporters of PaidaOrphanage and look forward to showing continuous improvements in the lives of our children.

AUDITOR'S COMMENTS

On May the 18th 2014, Delphine Menezes Cordeiro and Martin Keller reviewed the annual report and in particular the annual financial statement and hereby acknowledge the correctness and completeness of the year-end reporting. The audit committee confirms that the bookkeeping was conducted in a careful and transparent way. There were no problems to address. If the reader wishes to obtain additional information regarding the financial statement, he/she can contact the audit committee for more details (under info@paidaorphanage.org).





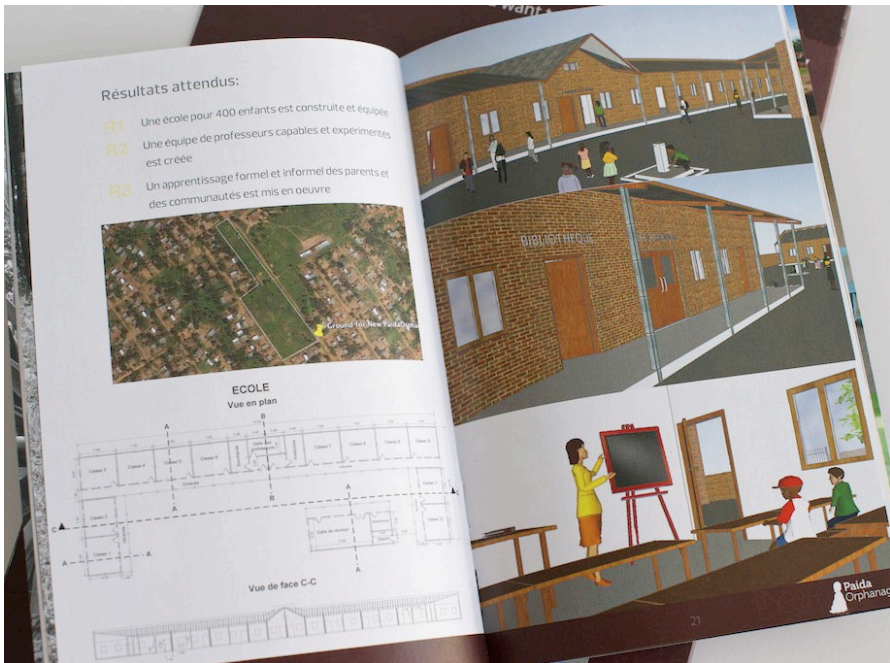
ANNEXES

A) Detail of estimates for school project

USD	Classrooms 1, 2, 3 Toilets	Classrooms 4, 5, 6 Administration area	Classrooms 10, 11, 12 Library	Classrooms 7, 8, 9 Playing area	Total for complete school
Cost for tools and equipment	1,115	970	990	1,115	4,190
Cost for construction materials	25,877	29,785	34,490	28,042	118,195
Labor cost	7,637	7,889	9,165	7,950	32,640
Cost for architect supervision	2,579	2,899	3,180	2,668	11,326
Unforeseen (5% of material, labor and supervision costs)	1,805	2,029	2,342	1,993	8,108
Cost for interior equipment (furniture)	1,305	1,475	1,465	1,305	5,550
Total	40,318	45,046	51,632	43,013	180,009

B) Examples of fund raising documents





C) Names and pictures of sponsored children



Marie-Luc



Marie-Ange Chance



Dorcas



Marie-Louise



Jospin



Robert



Kamen



Rodrigue



Archange



Gloriose



Judith

D) School grades of the children going to school in 2013

Groupe I		Trimestre	1	2	3	Total	Qual.	Coul.
		Maxima	8	8	8	24		
1. Activités d'Arts plastiques			2	4	2	8	11	
2. Activités de comportement			5	8	8	21	E	
3. Activités musicales			7	6	7	20	E	
4. Activités physiques			7	8	7	22	E	
5. Activités de schémas corporels			7	8	6	21	E	
6. Activités sensorielles			8	8	4	20	E	
7. Activités de structuration spatiale			7	6	6	19	TB	
8. Activités de vie pratique			5	6	6	17	TB	
Sous - Total			48/64	54/64	46/64	148/192	TB	
Groupe II		Maxima	12	12	12	36		
9. Activités exploratrices			7	9	11	27	TB	
10. Activités de langage			8	9	9	25	B	
11. Activités mathématiques			2	12	9	23	B	
Sous - Total			17/36	23/36	29/36	75/108	B	
Groupe III		Maxima	10	10	10	30		
12. Activités libres			15	17	16	48	E	
Sous - Total			15/20	17/20	16/20	48/60	E	
		Total	80/120	100/120	81/120	271/360	TB	
		Qualité	B	E	TB	TB		
		Couleur						
		Signatures	100-80	79-70	69-50	49-40	39-0	
Trimestre		Instituteur	Parent	Elite	T.B.	Bon	A.B.	Méd.
1 ^{er} Trimestre		<i>[Signature]</i>	<i>[Signature]</i>	Jaune	Bleu	Vert	Noir	Rouge
2 ^e Trimestre		<i>[Signature]</i>	<i>[Signature]</i>					
3 ^e Trimestre		<i>[Signature]</i>	<i>[Signature]</i>					
Légende Qual. : appréciation qualitative		Fait à le 22/02/2013.						
Coul. : couleur correspondante		Sceau						
Observation : Très élogiant, - Moyennement intelligent, - Mais très faible à l'écriture - Très têtue		Le (la) Directeur (trice) S2 SOKI SAA-SITA						



REPUBLIQUE DEMOCRATIQUE DU CONGO
MINISTRE DE L'ENSEIGNEMENT PRIMAIRE,
SECONDAIRE ET PROFESSIONNEL



N° ID

PROVINCE: NORD-KIVU

TERRITOIRE / COMMUNE: B.F.U.

NOM: MUNYIMBA

POSTNOM: KAMBALO SEXE: m

ECOLE: C.S. MARIE CORREYSON

NE (E) A: le 31.10.1999

MATRICULE: 7

CLASSE: 7

CODE ECOLE:

MATRICULE:

N°PERM

BULLETIN DE L'ENFANT DE LA 2^e, 3^e ANNEE MATERNELLE ANNEE SCOLAIRE 20132014

Groupe I	Trimestre		1	2	3	Total	Qual.	Coul
	Maxima							
1. Activités de schémas corporels			3			12		
2. Activités de latéralité			3					
3. Activités structuration spatiale			3					
4. Activités d'orientation temporelle			2					
Sous - Total			11	/16	/16	/16	/48	
Groupe II	Maxima							
5. Activités sensorielles			2					
6. Activités physiques			6					
7. Activités d'arts plastiques			3					
8. Activités musicales			2					
9. Activités de vie pratique			6					
10. Activités de comportement			2					
Sous - Total			26	/48	/48	/48	/144	
Groupe III	Maxima							
11. Activités exploratrices			8					
12. Activités de langage			10					
13. Activités mathématiques			10					
Sous - Total			28	/36	/36	/36	/108	
Groupe IV	Maxima							
14. Activités libres			12					
Sous - Total			12	/20	/20	/20	/60	
Appréciation générale	Total		43	/120	/120	/120	/120	
	Qualité		5.3					
	Couleur							
Signatures			100-80	79-70	69-50	49-40	39-0	
Trimestre	Instituteur	Parent	Elite	T.B	Bon	A.B	Méd	
1 ^{er} Trimestre	<i>[Signature]</i>	<i>[Signature]</i>	Jaune	Bleu	Vert	Noir	Rouge	
2 ^e Trimestre								
3 ^e Trimestre								
Légende Qual. : appréciation qualitative			Fait à.....le...../.....20.....					
Coul. : couleur correspondante			Sceau de l'école					
Observation:			Le (la) Directeur (Trice)					
IGE/PS.003								



REPUBLIQUE DEMOCRATIQUE DU CONGO
MINISTRE DE L'ENSEIGNEMENT PRIMAIRE,
SECONDAIRE ET PROFESSIONNEL



N°ID

PROVINCE: NORD KIVU II

TERRITOIRE/COMMUNE: B.E.C. NOM: M. HADDO

POST NOM: JOSPH SEXE

ECOLE: M. CORRENSON NE (E) A: B.E.C. le 12/03/2013

MATRICULE: 73 Annexe CLASSE: 73 Annexe

CODE ECOLE:

MATRICULE:

N°PERM:

BULLETIN DE L'ENFANT DE LA 2^e, 3^e ANNEE MATERNELLE ANNEE SCOLAIRE 20.....-20.....

Groupe I	Trimestre		1	2	3	Total	Qual.	Coul.
	Maxima							
1. Activités de schémas corporels	2	2	2	2	2	2	B	
2. Activités de latéralité	3	3	3	3	3	3	B	
3. Activités de structuration spatiale	4	4	4	4	4	4	E	
4. Activités d'orientation temporaire	2	2	2	2	2	2	B	
Sous - Total	11/16	11/16	11/16	11/16	11/16	34/48	OB	
Groupe II	Maxima							
5. Activités sensorielles	8	8	8	8	8	8	OB	
6. Activités physiques	6	5	6	5	6	18	OB	
7. Activités d'arts plastiques	4	4	4	4	4	14	B	
8. Activités musicales	5	4	5	4	5	14	B	
9. Activités de vie pratique	3	4	3	4	3	13	B	
10. Activités de comportement	4	5	4	5	4	15	B	
10. Activités de comportement	5	5	5	5	5	16	B	
Sous - Total	27/48	27/48	36/48	36/48	36/48	90/144	B	
Groupe III	Maxima							
11. Activités exploratrices	12	12	12	12	12	36	OB	
12. Activités de langage	8	10	8	10	8	26	OB	
13. Activités mathématiques	8	10	8	10	8	24	B	
Sous - Total	26/36	22/36	32/36	32/36	32/36	80/108	OB	
Groupe IV	Maxima							
14. Activités libres	20	20	20	20	20	60	OB	
Sous - Total	14/20	15/20	16/20	16/20	16/20	45/60	OB	
Total	74/120	75/120	96/120	96/120	96/120	249/360	B	
Qualité	B	B	E	B	B	B		
Couleur	B	B	E	B	B	B		

Signatures

Trimestre	Instituteur		Parent		100-80	79-70	69-50	49-40	39-0
	Elite	T.B.	Bon	A.B.	Jaune	Bleu	Vert	Noir	Rouge
1 ^{er} Trimestre	<i>[Signature]</i>	<i>[Signature]</i>	<i>[Signature]</i>	<i>[Signature]</i>					
2 ^e Trimestre	<i>[Signature]</i>	<i>[Signature]</i>	<i>[Signature]</i>	<i>[Signature]</i>					
3 ^e Trimestre	<i>[Signature]</i>	<i>[Signature]</i>	<i>[Signature]</i>	<i>[Signature]</i>					

Légende Qual. : appréciation qualitative Fait à B.E.C. le 12/03/2013
Coul. : couleur correspondante

Observation: - Il est moyennement intelligent
- Il s'exprime en français.
- mais trois tete

IGE/PS.003



Le (la) Directeur (trice)
S.B. SOKI SAA-SITA

[Signature]

REPUBLIQUE DEMOCRATIQUE DU CONGO
MINISTRE DE L'ENSEIGNEMENT PRIMAIRE,
SECONDAIRE ET PROFESSIONNEL



N°ID

PROVINCE: MOAND-KIVU

TERRITOIRE/COMMUNE: B. E. U. NOM: M. G. U. P. U. ROBERT
 ECOLE: C. S. C. N. CARRE SAAS POST NOM: SEXE
 MATRICULE: NE (E) A: B. U. M. G. A. le 23/08/2003
 CODE ECOLE: CLASSE: 1^{ère} ANNEE
 MATRICULE: N°PERM:

BULLETIN DE L'ENFANT DE LA PREMIERE ANNEE MATERNELLE ANNEE SCOLAIRE 2012-2013.

Groupe I	Trimestre		1	2	3	Total	Qual.	Coul.
	Maxima		1	8	8	8	24	
1. Activités d'Arts plastiques			3	4	3	10	AB	
2. Activités de comportement			3	6	6	15	B	
3. Activités musicales			1	4	7	12	B	
4. Activités physiques			4	7	7	18	TB	
5. Activités de schémas corporels			4	7	8	19	TB	
6. Activités sensorielles			6	8	7	21	E	
7. Activités de structuration spatiale			7	8	8	23	E	
8. Activités de vie pratique			4	5	7	16	B	
Sous - Total			32/64	64	53/64	134/192	B	
Groupe II	Maxima		12	49/12	12	36		
9. Activités exploratrices			6	10	5	21	B	
10. Activités de langage			8	7	10	25	B	
11. Activités mathématiques			6	12	11	29	E	
Sous - Total			20/36	29/36	26/36	75/108	B	
Groupe III	Maxima		20	70	20	60		
12. Activités libres			12	17	18	47	TB	
Sous - Total			12/20	17/20	18/20	47/60	TB	
Total			64/120	85/120	97/120	256/360	TB	
Qualité			B	TB	E	TB		
Couleur								
Signatures			100-80	79-70	69-50	49-40	39-0	
Trimestre	Instituteur	Parent	Elite	T.B.	Bon	A.B.	Méd.	
1 ^{er} Trimestre			Jaune	Bleu	Vert	Noir	Rouge	
2 ^e Trimestre								
3 ^e Trimestre								
Légende Qual. : appréciation qualitative			Fait à <u>B. E. U.</u> le <u>23/08/2013</u> .					
Coul. : couleur correspondante			Sceau de l'école					
Observation: - Il s'exprime en français - moyennement intelligent - Mais très têtu.			Le (la) Directeur (trice) S ^{re} SOKI SAA-SITA					
IGE/PS.002								

REPUBLIQUE DEMOCRATIQUE DU CONGO
MINISTRE DE L'ENSEIGNEMENT PRIMAIRE,
SECONDAIRE ET PROFESSIONNEL



N°ID

PROVINCE: NORD-KIVU

TERRITOIRE/COMMUNE: B.E.U. NOM: M. D. V. YA. B. D. A. S. H. E.
POST NOM: SEXE M F
ECOLE: C. S. C. N. CORRENSON NE (E) A: B. L. M. L. L. L. le 13.12.2012
MATRICULE: CLASSE: 1^{ère} année B.E.
CODE ECOLE: MATRICULE:
N°PERM:

BULLETIN DE L'ENFANT DE LA PREMIERE ANNEE MATERNELLE ANNEE SCOLAIRE 2012-2013

Groupe I	Trimestre	1	2	3	Total	Qual.	Coul.
	Maxima	8	8	8	24		
1. Activités d'Arts plastiques		2	4	4	10	AB	
2. Activités de comportement		7	8	8	23	E	
3. Activités musicales		6	5	7	18	TB	
4. Activités physiques		6	7	7	20	E	
5. Activités de schémas corporels		7	7	6	20	E	
6. Activités sensorielles		8	7	7	22	E	
7. Activités de structuration spatiale		8	8	8	24	E	
8. Activités de vie pratique		5	6	7	18	TB	
Sous - Total		49/64	52/64	54/64	155/192	E	
Groupe II	Maxima	12	12	12	36		
9. Activités exploratrices		7	9	11	27	TB	
10. Activités de langage		9	10	11	30	E	
11. Activités mathématiques		3	9	10	22	B	
Sous - Total		19/36	28/36	32/36	79/108	TB	
Groupe III	Maxima	20	20	20	60		
12. Activités libres		16	18	19	53	E	
Sous - Total		16/20	18/20	19/20	52/60	E	
	Total	84/120	98/120	105/120	287/360	TB	
	Qualité	B	E	E	TB		
	Couleur						
Signatures		100-80	79-70	69-50	49-40	39-0	
Trimestre	Instituteur	Parent	Elite	T.B.	Bon	A.B.	Méd.
1 ^{er} Trimestre	<i>[Signature]</i>	<i>[Signature]</i>	Jaune	Bleu	Vert	Noir	Rouge
2 ^e Trimestre	<i>[Signature]</i>	<i>[Signature]</i>					
3 ^e Trimestre	<i>[Signature]</i>	<i>[Signature]</i>					
Légende Qual. : appréciation qualitative			Fait à <u>MOCHE</u> le <u>13.12.2012</u>				
Coul. : couleur correspondante			Sceau de l'ECOLE MATERNELLE CORRENSON DES OBLATES R.P. 9 BEL				
Observation : - Il s'exprime en français. - Il est intelligent. - Mais bête.			Le (la) Directeur (trice) SA SOKI SAA-SITA <i>[Signature]</i>				



REPUBLIQUE DEMOCRATIQUE DU CONGO
MINISTRE DE L'ENSEIGNEMENT PRIMAIRE,
SECONDAIRE ET PROFESSIONNEL



N° ID

PROVINCE: NORD-KIVU

TERRITOIRE / COMMUNE: B.E.V. NOM: R.D.E. U.S.A. K.S.E.M.B.O.

ECOLE: E.S. MARIE COCKENSEN POSTNOM: R.D.R.I.C.H.E SEXE: M

MATRICULE: 11 NE (E) A: le 13.1.04.1999

CODE ECOLE:

CLASSE: 11



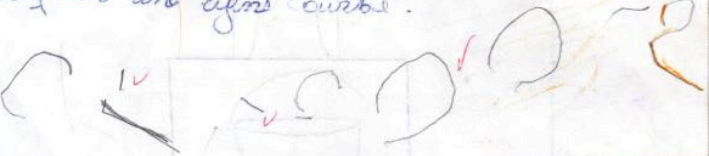

MATRICULE:

N°PERM

BULLETIN DE L'ENFANT DE LA 2^e, 3^e ANNEE MATERNELLE ANNEE SCOLAIRE 2011-2012

Groupe I	Trimestre	1	2	3	Total	Qual.	Coul
	Maxima	4	4	4	12		
1. Activités de schémas corporels		3					
2. Activités de latéralité		3					
3. Activités structuration spatiale		3					
4. Activités d'orientation temporelle		2					
Sous - Total		11	/16	/16	/16	/48	
Groupe II	Maxima		/8	/8	/8	/24	
5. Activités sensorielles		8					
6. Activités physiques		7					
7. Activités d'arts plastiques		4					
8. Activités musicales		2					
9. Activités de vie pratique		2					
10. Activités de comportement		6					
Sous - Total		40	/48	/48	/48	/144	
Groupe III	Maxima		/12	/12	/12	/36	
11. Activités exploratrices		11					
12. Activités de langage		12					
13. Activités mathématiques		8					
Sous - Total		32	/36	/36	/36	/108	
Groupe IV	Maxima		/20	/20	/20	/60	
14. Activités libres		16					
Sous - Total		16	/20	/20	/20	/60	
Appréciation générale	Total	58	/120	/120	/120	/120	
	Qualité						
	Couleur	E					
Signatures		100-80	79-70	69-50	49-40	39-0	
Trimestre	Instituteur	Parent	Elite	T.B	Bon	A.B	Méd
1 ^{er} Trimestre			Jaune	Bleu	Vert	Noir	Rouge
2 ^e Trimestre							
3 ^e Trimestre							
Légende Qual. : appréciation qualitative			Fait à				
Coul. : couleur correspondante			le 20.....				
Observation:			de				
			Le (la) Directeur (Trice)				
			de l'école				

IGE/PS.003

<p>① ORCAS</p>	<p><u>EXAMENS DU I^{er} TRIMESTRE</u> ACT. MATHÉMATIQUE / Comptage</p>
<p>E 4/4</p>	<p>Je barre 2 images dans chaque ensemble.</p> 
<p>B 2/4</p>	<p><u>ensemble</u> Ajouter dans chaque ensemble pour avoir 3 éléments</p> 
<p>CB 3/4</p>	<p><u>forme</u> Dessiner une ligne droite verticale, horizontale, oblique et une ligne courbe.</p> 
<p>B 2/4</p>	<p><u>ART. ART. PLASTIQUE DE Dessin.</u> Je dessine l'image de la hute.</p> 

DORICAS

I TRIMESTREDEVOIR N°1

21/10/2013

ACT. D'ART PLASTIQUE / DESSIN

je dessine l'image de la case.

E



21/10/2013

n° 2

je dessine l'image de la fenêtre.

B



RICHARD OIES

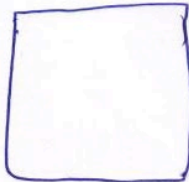
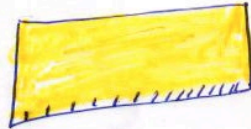
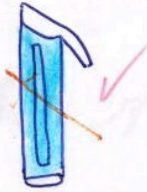
I. SEMESTRE

DEVOIR N°1

ACTIVITE SENSORIELLE DE VUE

Je barre seulement les images qui ont la couleur bleu.

UB



ARCHAÏQUES

no 2
Graphisme

5/11/2013

je répare sur les ovales effilés

A.B
↓~~oooo~~

oooo

↓

~~oooo~~~~oooo~~

28/11

no 3

2013

je répare sur les lunettes

A.B

~~oo~~

oo

oo

oo

~~oo~~~~oo~~

oo

~~oo~~

E) List of children present in the orphanage in December 2013

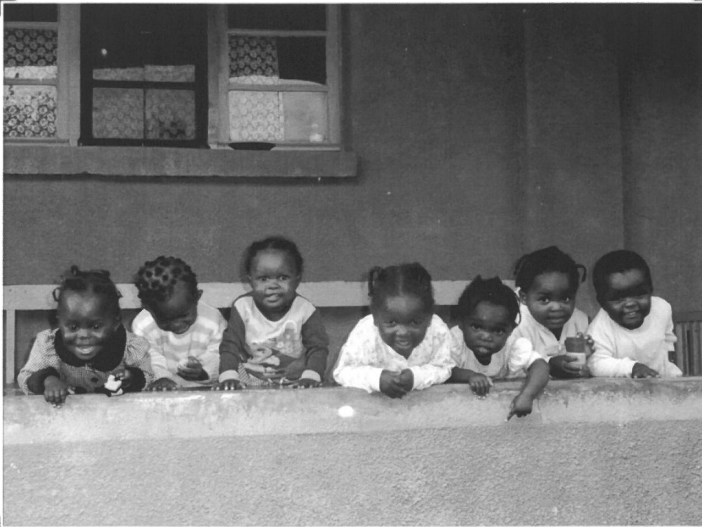
No.	Name, Surname	Date of birth	Age	Weight (in kg)	Height (in cm)
1	Philémon	25/07/96	17,4	55	169
2	Jospin MUHINDO	24/04/07	6,7	18	102
3	Marie-Louise KAVIRA MUNYINDO	20/07/07	6,4	18	119
4	Archange KAKULE KISUVA	31/08/08	5,3	16	100
5	Dorcias KAKULE KAHIRA MUHIRA	31/08/08	5,3	16	104
6	Marie-Ange Chance BAHATI	25/03/09	4,8	18	107
7	Robert PALUKU NGURU KAPARA	13/08/09	4,4	17	102
8	Rodrigue PALUKU NGURU KAPARA	13/08/09	4,4	17	101
9	Marie-Luc KAVIRA NTUMELI	18/10/09	4,2	13	89
10	Kamen KAKULE TWAMBWA	15/12/09	4,0	13	90
11	Moise OLYMBIO KATEMBO	13/02/10	3,9	13	97
12	Louange KAHINDO KAVUNGA	03/03/10	3,8	13	94
13	Harmand MUHINDO MUPIRI MUPIKA	25/09/10	3,3	13	84
14	Martinette KAVIRA TSONGO	11/11/10	3,1	13	92
15	Tatiana BELANDE PAME	12/01/11	3,0	11	89
16	Rose MADAWA EVHEUBO	26/03/11	2,8	10	77,5
17	Augustin KAMBALE KATSALI	21/05/11	2,6	11	80
18	Euloge KAMBALE SAMBILI	09/07/11	2,5	11	76
19	Marie-Jeanne KAVIRA KARUKE	27/07/11	2,4	9	79
20	Angelique ANJIANI MANDULASI	21/07/11	2,4	8	78
21	Moise KAKULE	14/08/11	2,4	11	78
22	Sylvestre KAMBALE KASHIRO	25/11/11	2,1	11	78
23	Hilaire KAMBALE KAMATE KASEREKA MUHINDO	14/01/12	2,0	9	72
24	Consolée KAHINDO MUTHAHI	20/01/12	1,9	10	71
25	Elisabeth KATUNGU KERA	04/07/12	1,5	8	70
26	Pamela NGURU WAYIRE	27/07/12	1,4	6	69
27	Josias Prince NDOVYA SIKULI	17/10/13	0,2	3	50
28	Josaphat Prince NGURU SIKULI	17/10/13	0,2	4	56
29	Grace KATUNGU KYATSANDIRE	27/11/13	0,1	4	

F) Report of internship of student Sarah Hahusseau

Full report is available on demand at
info@paidaorphanage.org

Sarah Hahusseau
3ème B
Lycée Français International de Dubaï

Stage d'observation en entreprise



Paida Orphanage

24/02/2013-28/02/2013

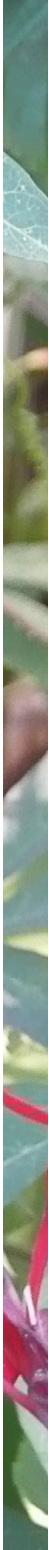
G) Picture of meeting of executive committee with 3 representatives of the Soeurs Oblates de l'Assomption in Paris



H) Pictures and Diploma of Bachelor's Degree in Psychology of Sister Patience



Sister Patience has obtained on July the 23th 2013 the Diploma of Bachelor's Degree in Psychology at the University "Faculté Africaine Bakhita" with a grade of 65% after having defended her thesis on the subject "The views of parents to the intellectual development of children from 0 to 5 years". Thanks to our donors, Sister Patience has been able to study since September 2010. The aim is for her to better understand the impact of loneliness of the orphans as well as better managing the process of adoption and reintegration of children to families. Always with the overall aim to enable the sisters to act should the child's well-being be threatened. Sister Patience will now stay for one year exclusively at the orphanage to put in practice her studies. Then she should resume her studies at University.





CONTACTS

PaidaOrphanage

Daniel Hoff and Marie-Laure de Quina
Av. Ernest Pictet 16 - 1203 Geneva
Switzerland

[**info@paidaorphanage.org**](mailto:info@paidaorphanage.org)

[**www.paidaorphanage.org**](http://www.paidaorphanage.org)

